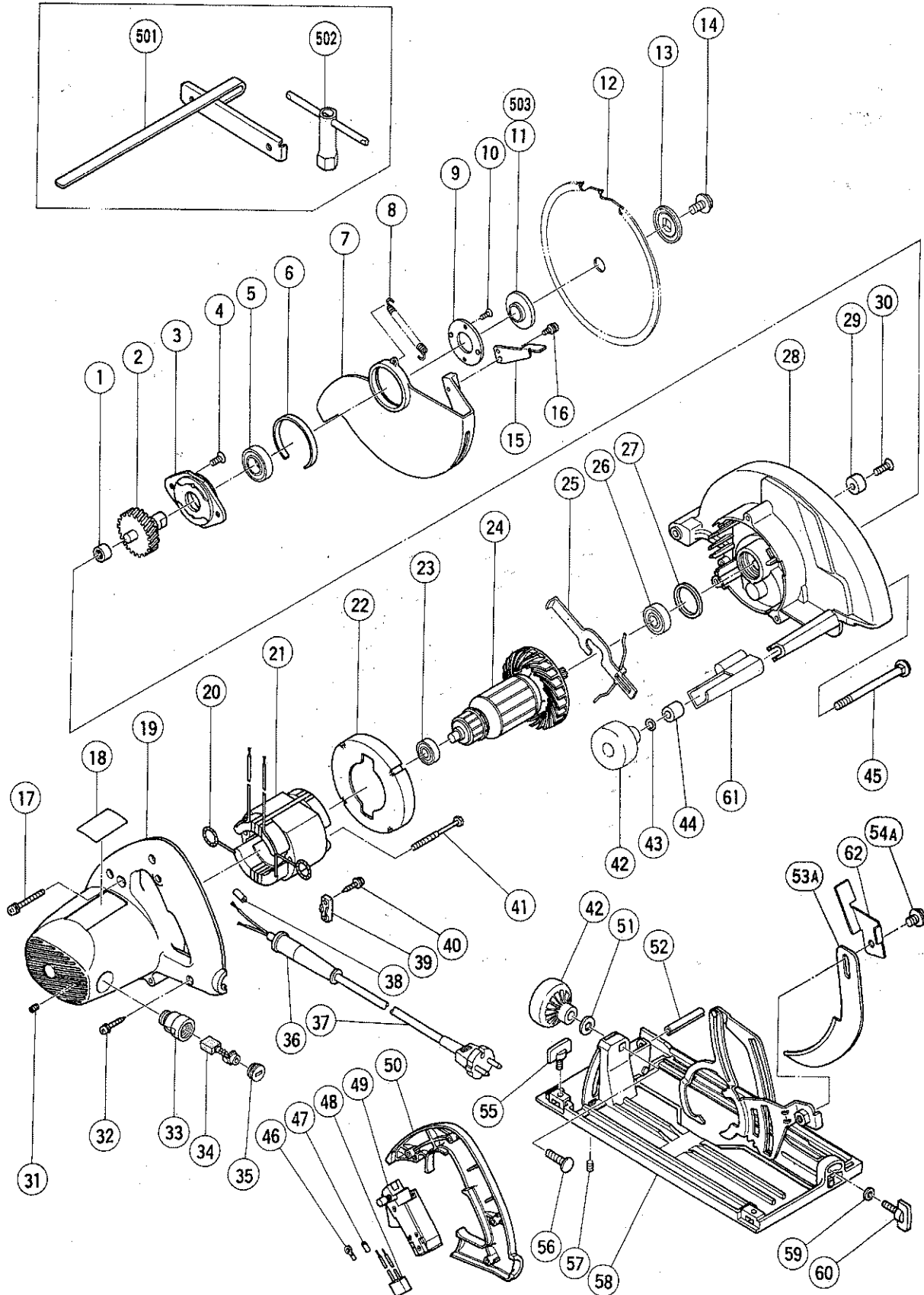


ELECTRIC TOOL PARTS LIST

■ CIRCULAR SAW
Model C 8U

1993.7.28
(E2)



PARTS

C 8U

ITEM NO.	CODE NO.	DESCRIPTION	NO. USED	REMARKS
1	982-027	NEEDLE BEARING (HK1010)	1	
2	303-875	SPINDLE GEAR	1	
3	303-876	BEARING HOLDER	1	
4	303-797	SEAL LOCK FLAT HD. SCREW M6X14	2	
5	600-3VV	BALL BEARING 6003VVCMP2S	1	
6	981-807	BUSHING	1	
7	303-880	SAFETY COVER	1	
8	304-010	RETURN SPRING	1	
9	302-435	BEARING COVER	1	
10	990-430	SEAL LOCK FLAT HD. SCREW M4X10	2	
*	11	302-476	1	WASHER (A) FOR D30 HOLE
*	11	302-443	1	WASHER (A) FOR D16 HOLE FOR FRA,SUI
*	11	303-385	1	WASHER (A) FOR D25 HOLE FOR GRC
*	12	303-886	1	TCT SAW BLADE 210MM - D30 HOLE - NT20
*	12	303-358	1	TCT SAW BLADE 210MM - D16 HOLE - NT20 FOR FRA,SUI
*	12	303-359	1	TCT SAW BLADE 210MM - D25 HOLE - NT20 FOR GRC
	13	302-423	1	WASHER (B)
	14	302-427	1	FLANGE BOLT M8X15.5
	15	302-464	1	KNOB
	16	986-662	1	MACHINE SCREW (W/WASHERS) M4X10
	17	303-883	3	MACHINE SCREW (W/WASHERS) M5X45
	18		1	NAME PLATE
*	19	303-884	1	HOUSING ASS'Y INCLUD.31,33
*	19	303-885	1	HOUSING ASS'Y INCLUD.31,33 FOR FRA,SWE
	20	937-623	2	BRUSH TERMINAL
*	21	340-232J	1	STATOR ASS'Y 110V INCLUD.20
*	21	340-236K	1	STATOR ASS'Y 220V INCLUD.20
*	21	340-232H	1	STATOR ASS'Y 240V INCLUD.20
	22	303-878	1	FAN GUIDE
	23	600-0VV	1	BALL BEARING 6000VVCMP2S
*	24	360-217C	1	ARMATURE 110V
*	24	360-217E	1	ARMATURE 220V
*	24	360-217F	1	ARMATURE 240V
	25	303-877	1	LOCK LEVER
	26	620-1VV	1	BALL BEARING 6201VVCMP2S
	27	302-432	1	RUBBER RING
	28	303-882	1	GEAR COVER ASS'Y INCLUD.1,27,29,30
	29	981-729	1	CUSHION
	30	949-794	1	FLAT HD. SCREW M6X20 (10 PCS.)
	31	938-477	2	HEX. SOCKET SET SCREW M5X8
	32	301-653	3	TAPPING SCREW (W/FLANGE) D4X20 (BLACK)
	33	983-362	2	BRUSH HOLDER
	34	999-038	2	CARBON BRUSH (1 PAIR)
	35	961-781	2	BRUSH CAP
*	36	958-049Z	1	CORD ARMOR D8.2
*	36	940-778	1	CORD ARMOR D10.7
*	37	500-234Z	1	CORD (CORD ARMOR D8.2)
*	37	500-247Z	1	CORD (CORD ARMOR D10.7) FOR FRG,SWE,NOR, FIN
*	37	500-248Z	1	CORD (CORD ARMOR D10.7) FOR SUI
*	37	958-065Z	1	CORD (CORD ARMOR D8.2) FOR GBR

*: ALTERNATIVE PARTS

STANDARD ACCESSORIES

C8U

ITEM NO.	CODE NO.	DESCRIPTION	NO. USED	REMARKS
501	303-887	GUIDE	1	
502	302-478	BOX WRENCH 13MM	1	
503	302-478	WASHER (A)	1	FOR D30 HOLE, SINCE 9.1991 FOR FRA

OPTIONAL ACCESSORIES

ITEM NO.	CODE NO.	DESCRIPTION	NO. USED	REMARKS
601	303-930	DUST COLLECTOR SET (E)	1	

* : ALTERNATIVE PARTS