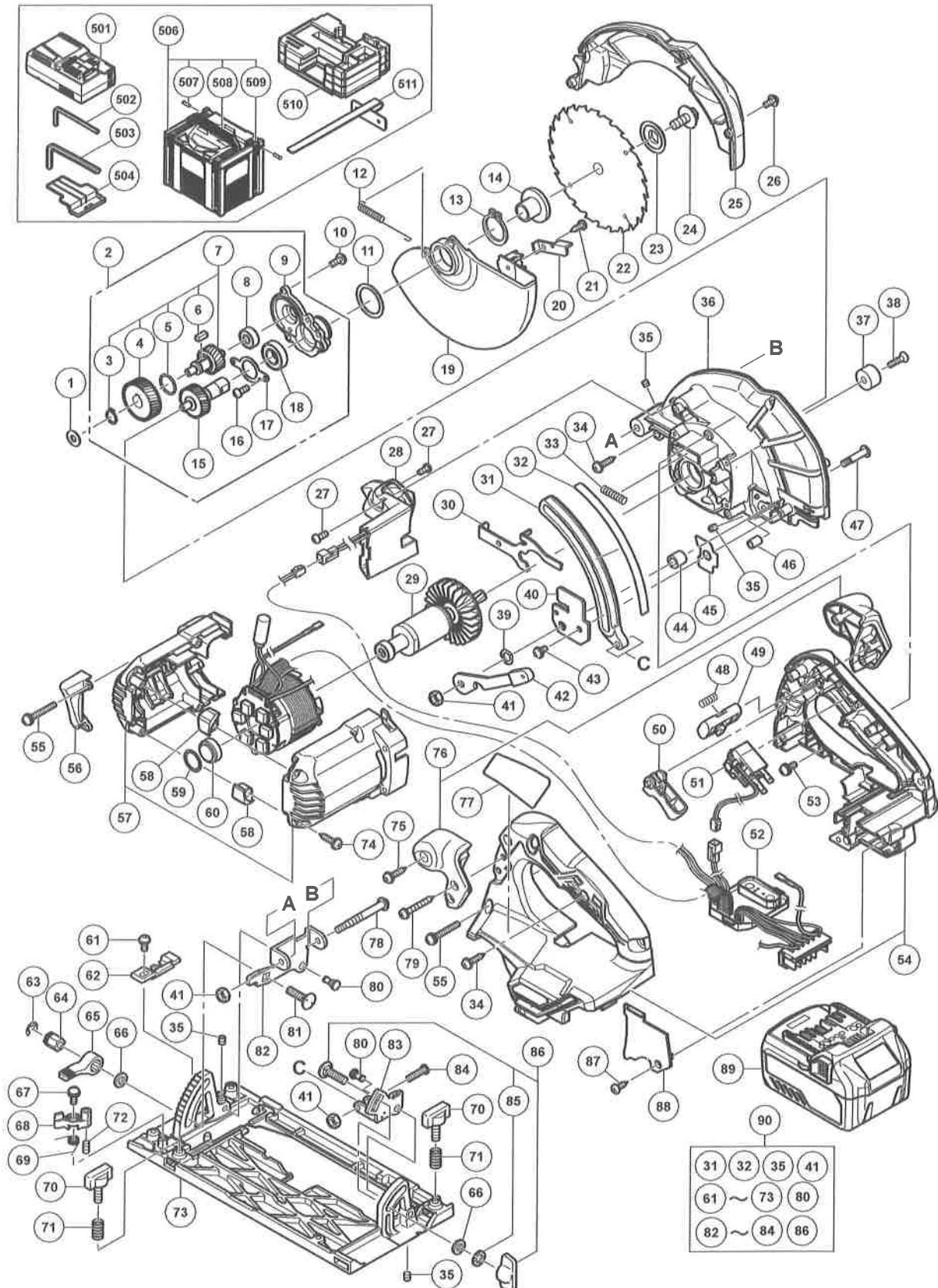


ELECTRIC TOOL PARTS LIST

CORDLESS CIRCULAR SAW Model C 3606DA

2017-11-15
(E1)



PARTS

C 3606DA

| ITEM NO. | CODE NO. | DESCRIPTION | NO. USED | REMARKS |
|----------|----------|--|----------|------------------|
| 1 | 329975 | WASHER (A) | 1 | |
| 2 | 338920 | BEARING HOLDER ASS'Y | 1 | INCLUD.7-9,15-18 |
| 3 | 316487 | RETAINING RING FOR D11 SHAFT | 1 | |
| 4 | 338925 | FIRST GEAR | 1 | |
| 5 | 319567 | O-RING (S-15) | 1 | |
| 6 | 930511 | FEATHER KEY 4 X 4 X 10 | 1 | |
| 7 | 338924 | SECOND SHAFT ASS'Y | 1 | INCLUD.3-6 |
| 8 | 606ZZM | BALL BEARING 606VV | 1 | |
| 9 | 338921 | BEARING HOLDER | 1 | |
| 10 | 951039 | MACHINE SCREW (W/SP. WASHER) M4 X 12 | 3 | |
| 11 | 339257 | WASHER | 1 | |
| 12 | 373078 | RETURN SPRING | 1 | |
| 13 | 939548 | RETAINING RING FOR D22 SHAFT (10 PCS.) | 1 | |
| 14 | 338915 | WASHER (A) | 1 | |
| 15 | 338923 | SPINDLE GEAR SET | 1 | |
| 16 | 949203 | MACHINE SCREW M3 X 8 (10 PCS.) | 2 | |
| 17 | 338922 | BEARING COVER | 1 | |
| 18 | 6901VV | BALL BEARING 6901VV | 1 | |
| 19 | 338905 | LOWER GUARD | 1 | |
| 20 | 338927 | KNOB | 1 | |
| 21 | 302090 | TAPPING SCREW D4 X 10 (BLACK) | 1 | |
| 22 | 338935 | TCT SAW BLADE 165MM-D20 HOLE-NT24 | 1 | |
| 23 | 338916 | WASHER (B) | 1 | |
| 24 | 338917 | HEX FLANGE BOLT | 1 | |
| 25 | 372880 | SAW COVER (GREEN) | 1 | |
| 26 | 333781 | MACHINE SCREW (W/WASHER) M4 X 12 (BLACK) | 1 | |
| 27 | 323211 | MACHINE SCREW M4 X 8 (BLACK) | 2 | |
| 28 | 339218 | LED | 1 | |
| 29 | 361078 | ROTOR (C) ASS'Y | 1 | |
| 30 | 338918 | LOCK LEVER | 1 | |
| 31 | 371943 | LINK | 1 | |
| 32 | 339258 | GAUGE PLATE (A) | 1 | |
| 33 | 334225 | SPRING | 1 | |
| 34 | 307811 | TAPPING SCREW (W/FLANGE) D4 X 16 (BLACK) | 5 | |
| 35 | 319541 | SEAL LOCK HEX. SOCKET SET SCREW M5 X 6 | 4 | |
| 36 | 338907 | GEAR COVER | 1 | |
| 37 | 310842 | CUSHION | 1 | |
| 38 | 949793 | FLAT HD. SCREW M5 X 20 (10 PCS.) | 1 | |
| 39 | 334242 | WAVE WASHER 8 | 1 | |
| 40 | 371946 | COVER PLATE | 1 | |
| 41 | 308387 | U-NUT M5 | 3 | |
| 42 | 338930 | LEVER (A) | 1 | |
| 43 | 372219 | SEAL LOCK SCREW (W/SP. WASHER) M4 | 1 | |
| 44 | 333681 | CAM | 1 | |
| 45 | 371947 | PLATE | 1 | |
| 46 | 338932 | LOCK SLEEVE | 1 | |
| 47 | 333680 | CAM SHAFT | 1 | |
| 48 | 336650 | SPRING | 1 | |
| 49 | 338901 | KNOB | 1 | |
| 50 | 338899 | TRIGGER | 1 | |

PARTS

C 3606DA

| ITEM NO. | CODE NO. | DESCRIPTION | NO. USED | REMARKS |
|----------|----------|---|----------|--------------------------------------|
| 51 | 371907 | SWITCH | 1 | |
| 52 | 340992 | STATOR FET PCB ASS'Y | 1 | INCLUD.28 |
| 53 | 305691 | MACHINE SCREW (W/WASHERS) M4 X 14 (BLACK) | 1 | |
| 54 | 371908 | HANDLE SET (GREEN) | 1 | |
| 55 | 334141 | MACHINE SCREW (W/WASHERS) M4 X 35 (BLACK) | 6 | |
| 56 | 338919 | FLOW GUIDE | 1 | |
| 57 | 338902 | HOUSING SET | 1 | |
| 58 | 336554 | CUSHION | 2 | |
| 59 | 372734 | WASHER (A) | 1 | |
| 60 | 338928 | RUBBER BUSHING | 1 | |
| 61 | 315500 | MACHINE SCREW (W/WASHER) M4 X 8 (BLACK) | 1 | |
| 62 | 338913 | GUIDE PIECE | 1 | |
| 63 | 942827 | RETAINING RING (E-TYPE) FOR D8 SHAFT | 1 | |
| 64 | 333660 | SPECIAL NUT M6 | 1 | |
| 65 | 333659 | CLAMP LEVER | 1 | |
| 66 | 949425 | WASHER M6 (10 PCS.) | 2 | |
| 67 | 317200 | MACHINE SCREW (W/WASHERS) M4 X 8 (BLACK) | 1 | |
| 68 | 333657 | STOPPER LEVER | 1 | |
| 69 | 339259 | SPRING (B) | 1 | |
| 70 | 307898 | WING BOLT M6 X 18 | 2 | |
| 71 | 324876 | SPRING | 2 | |
| 72 | 334142 | SEAL LOCK HEX. SOCKET SET SCREW M5 X 10 | 1 | |
| 73 | 371941 | BASE | 1 | |
| 74 | 301653 | TAPPING SCREW (W/FLANGE) D4 X 20 (BLACK) | 4 | |
| 75 | 301653 | TAPPING SCREW (W/FLANGE) D4 X 20 (BLACK) | 1 | |
| 76 | 338934 | SUB HANDLE | 1 | INCLUD.75 |
| 77 | | NAME PLATE | 1 | |
| 78 | 339260 | ADJUSTING SCREW (A) | 1 | |
| 79 | 305490 | TAPPING SCREW (W/FLANGE) D4 X 30 (BLACK) | 2 | |
| 80 | 320163 | STEP PIN D6 X 13 | 2 | |
| 81 | 314623 | BOLT (SQUARE) M6 X 22 | 2 | |
| 82 | 338910 | BEVEL PLATE | 1 | |
| 83 | 371944 | SUB LINK | 1 | |
| 84 | 371945 | SPECIAL SCREW | 1 | |
| 85 | 948167 | SUPER LOCK WASHER M6 | 1 | |
| 86 | 314620 | BOLT ASS'Y (SQUARE) M6 X 22 | 1 | INCLUD.85 |
| 87 | 334333 | TAPPING SCREW D3 X 12 (BLACK) | 1 | |
| 88 | 371909 | HANDLE COVER (GREEN) | 1 | |
| 89 | 371750 | BATTERY BSL 36A18 (EUROPE,AUS,NZL) | 2 | INCLUD.504 |
| 90 | 371939 | BASE ASS'Y | 1 | INCLUD.31,32,35,41,61-73,80,82-84,86 |
| | | | | |
| | | | | |
| | | | | |
| | | | | |
| | | | | |
| | | | | |
| | | | | |
| | | | | |
| | | | | |
| | | | | |
| | | | | |

