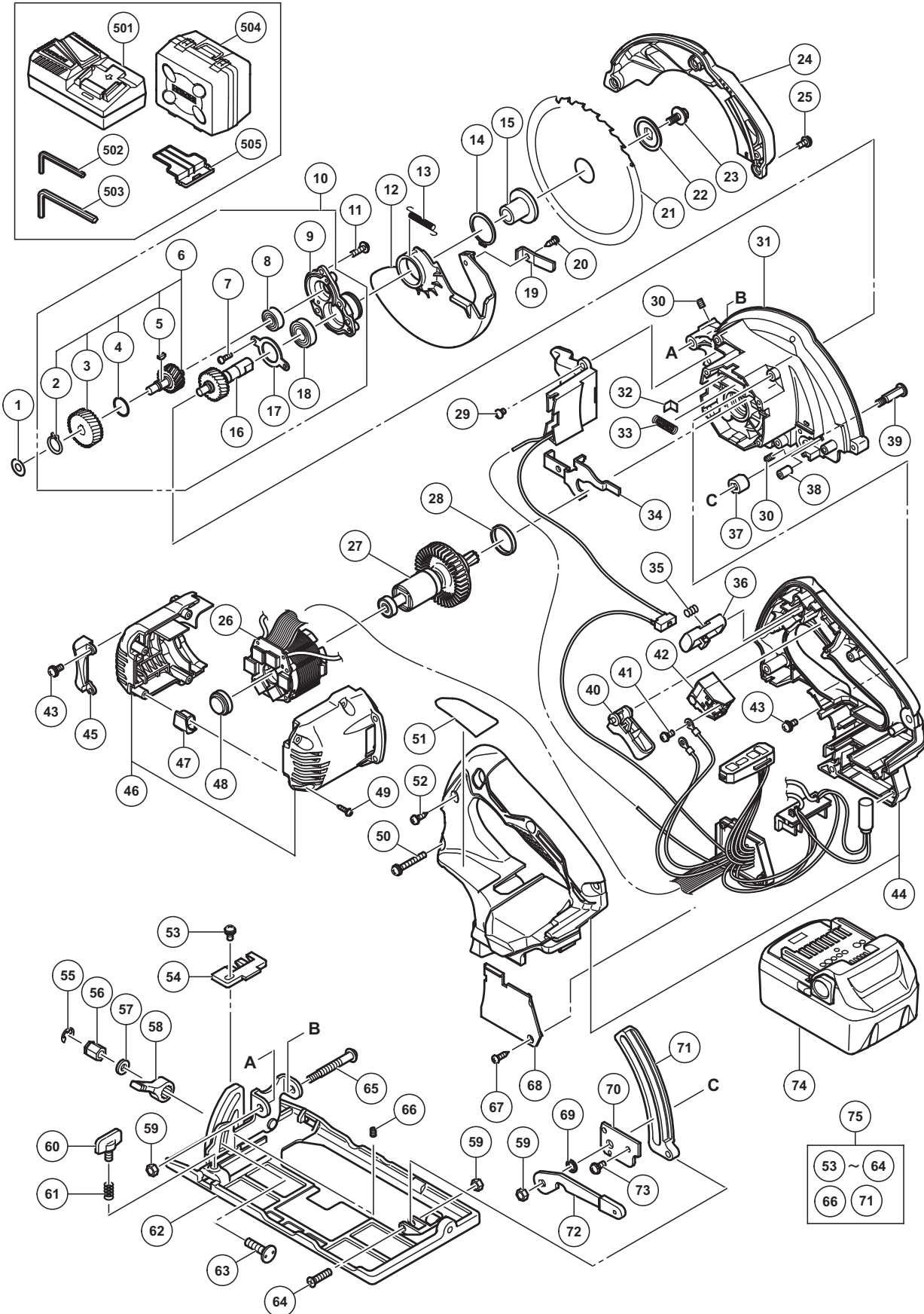


ELECTRIC TOOL PARTS LIST

CORDLESS CIRCULAR SAW
Model C 18DBL

2014·2·14
(E1)



PARTS

C 18DBL

ITEM NO.	CODE NO.	DESCRIPTION	NO. USED	REMARKS
1	329975	WASHER (A)	1	
2	939540	RETAINING RING FOR D10 SHAFT (10 PCS.)	1	
3	334144	FIRST GEAR	1	
4	876319	O-RING (S-14)	1	
5	302047	WOODRUFF KEY	1	
6	334226	SECOND SHAFT ASS'Y	1	INCLUD.2-5
7	949203	MACHINE SCREW M3 X 8 (10 PCS.)	3	
8	606ZZM	BALL BEARING 606VVC2	1	
9	333672	BEARING HOLDER	1	
10	334228	BEARING HOLDER ASS'Y	1	INCLUD.6-9,16-18
11	951039	MACHINE SCREW (W/SP. WASHER) M4 X 12	3	
12	336552	LOWER GUARD	1	
13	333677	RETURN SPRING	1	
14	939548	RETAINING RING FOR D22 SHAFT (10 PCS.)	1	
15	333666	WASHER (B)	1	
16	334227	SPINDLE GEAR SET	1	
17	333673	BEARING COVER	1	
18	6900VV	BALL BEARING 6900VVCMP2L	1	
19	333894	KNOB	1	
20	302090	TAPPING SCREW D4 X 10 (BLACK)	1	
* 21	336832	TCT SAW BLADE 125MM-D20 HOLE-NT24	1	
* 21	336832	TCT SAW BLADE 125MM-D20 HOLE-NT24	2	FOR AUS
22	333665	WASHER (A)	1	
23	333893	HEX. BOLT (W/FLANGE) M5 X 14	1	
24	336648	SAW COVER	1	
25	333781	MACHINE SCREW (W/WASHER) M4 X 12 (BLACK)	3	
26	340872	STATOR FET PCB ASS'Y	1	INCLUD.41,42
27	336547	ROTOR	1	
28	328453	RUBBER RING (A)	1	
29	949214	MACHINE SCREW M4 X 6 (10 PCS.)	1	
30	319541	SEAL LOCK HEX. SOCKET SET SCREW M5 X 6	2	
31	336646	GEAR COVER	1	
32	334137	SPRING HOOK	1	
33	334225	SPRING	1	
34	336555	LOCK LEVER	1	
35	336650	SPRING	1	
36	336546	KNOB	1	
37	333681	CAM	1	
38	333682	LOCK SLEEVE	1	
39	333680	CAM SHAFT	1	
40	336545	TRIGGER	1	
41	307887	MACHINE SCREW (W/WASHER) M3.5 X 6	2	
42	332552	SWITCH	1	
43	305691	MACHINE SCREW (W/WASHERS) M4 X 14 (BLACK)	5	
44	336550	HANDLE SET	1	
45	333669	FLOW GUIDE (C)	1	
46	336548	HOUSING SET	1	
47	336554	CUSHION	2	
48	328201	RUBBER BUSHING	1	
49	332929	TAPPING SCREW (W/FLANGE) D3 X 20	4	

